

# FLEX-HONE®

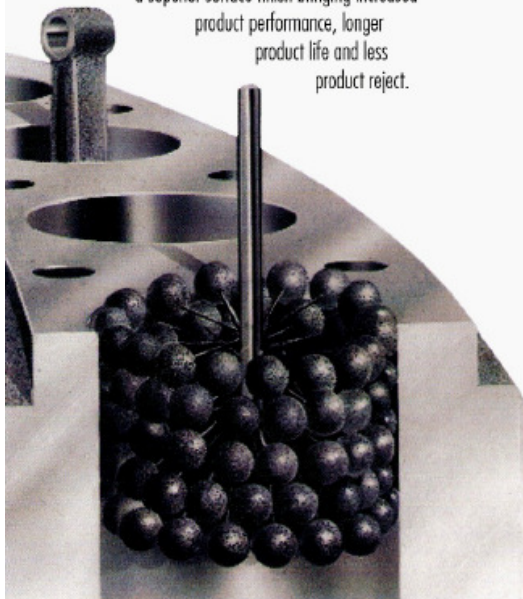
USA Patent Numbers 3384915, 3871139, 5211725, 5353553, US & Foreign Patents Allowed or Pending

The Flex-Hone® Tool produces a controlled surface condition unobtainable by any other method. The process involves finish, geometry and metallurgical structure. A high percentage plateaued surface is produced free of cut, torn and folded metal.

Specifically, the process is a low-temperature, low-pressure abrading system that exposes the undisturbed base metal structure to produce a long wearing surface; one that is metallurgically free of fragmented, amorphous or smeared metal from previous machining operations. A nondirectional or crosshatched pattern is created on the surface that contains valuable valleys between the plateaus for oil retention.

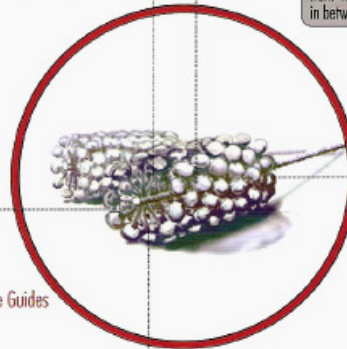
The Flex-Hone® Tool is a resilient, flexible honing tool with a soft cutting action. It's unique construction allows the abrasive globules or "stones" to float, assuring the tool will be self-centering, self-aligning to the bore and self-compensating for wear.

Whether your need is cross hole deburring, surface finishing or edge blending there is a Flex-Hone® Tool designed for you. In Automotive, Hydraulic, Pneumatic or Industrial applications, the Flex-Hone® Tool will provide a superior surface finish bringing increased product performance, longer product life and less product reject.



Each abrasive globule is attached to high density nylon filament to enhance durability

Flex-Hones come in sizes ranging from from 4mm to 36 inches and every size in between

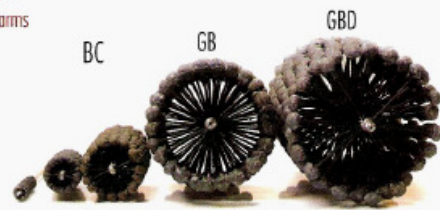


Special overall lengths can be custom made

8 different abrasive types and 11 different grit are available to cater to each users specific application

## Flex-Hone Applications

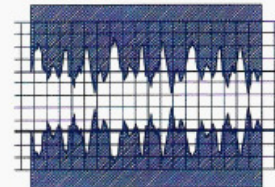
- Air Compressors
- Hydraulic Ram Cylinders
- Hydraulic Valve Bodies & Valve Guides
- Hydraulic Motor Bodies
- Pneumatic Cylinders
- Surface Finishing of Boiler Components
- Compressed Air Tool Bodies
- Brake Cylinders (Wheel)
- Clutch and Brake Master Cylinders
- Finishing of Stainless Steel Tubing
- Brake Rotors
- Engine Cylinders and Block Liners
- Barrels and Chambers for Firearms
- Musical Instruments
- And Many More



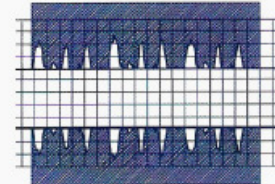
Color Marked on Tip of Hone

Color Marked on Stem of Hone

Before Flex-Hone



After Flex-Hone



The Flex-Hone® Tool removes peaks and other imperfections in cylinder walls, creating a desirable plateaued finish.

The result is reduction in localized heat and friction and improved performance.

